



# Transform Your Business, Accelerate Your Security with AI

Modern security threats require smarter, faster responses. C1 integrates powerful AI-driven automation across the entire Prevent, Detect, and Recover lifecycle—helping customers stay ahead of threats with less manual effort and more precision.

## Prevent

### Automate Your Defenses

80% of breaches involve compromised credentials

AI-driven IAM reduces false access requests by 75%

Stop threats before they start with AI-powered controls and predictive insights:

- ✓ **Identity & Access Management (IAM):** Enforced access policies powered by behavioral analytics
- ✓ **Zero Trust Security:** Continuous AI-based trust evaluation across devices and users
- ✓ **Next-Gen Network & Endpoint Protection:** Self-healing and auto-updating protection
- ✓ **Phishing & Awareness Defense:** Real-time phishing detection + adaptive training
- ✓ **Data Protection & Encryption:** Automated encryption and DLP policy enforcement
- ✓ **Cloud Security Posture Management (CSPM):** AI-driven misconfiguration alerts
- ✓ **Access Control & Surveillance:** Smart surveillance with AI-based anomaly alerts

## Detect

### Faster Threat Identification with AI

Average time to detect and contain a breach: 287 days

C1 customers using XDR & SOAR reduce it by up to 60%

See what others miss with real-time, AI-enhanced threat detection:

- ✓ **Managed Detection & Response (MDR):** 24/7 threat ops augmented with AI triage
- ✓ **Extended Detection & Response (XDR):** Machine learning for multi-surface correlation
- ✓ **Vulnerability Mgmt & Pen Testing:** AI-prioritized risk scoring
- ✓ **SIEM:** Intelligent event correlation and root cause analysis
- ✓ **Threat Intelligence & SOAR:** Automated playbooks triggered by AI confidence scoring
- ✓ **Cloud Threat Monitoring:** AI-classified SaaS/IaaS threat signals
- ✓ **Flow Analytics & Telemetry:** Behavior-based anomaly detection

## Recover

### Smarter, Safer Recovery

Average cost of a breach: \$9.5M

AI-driven response slashes mean time to recovery by 45%

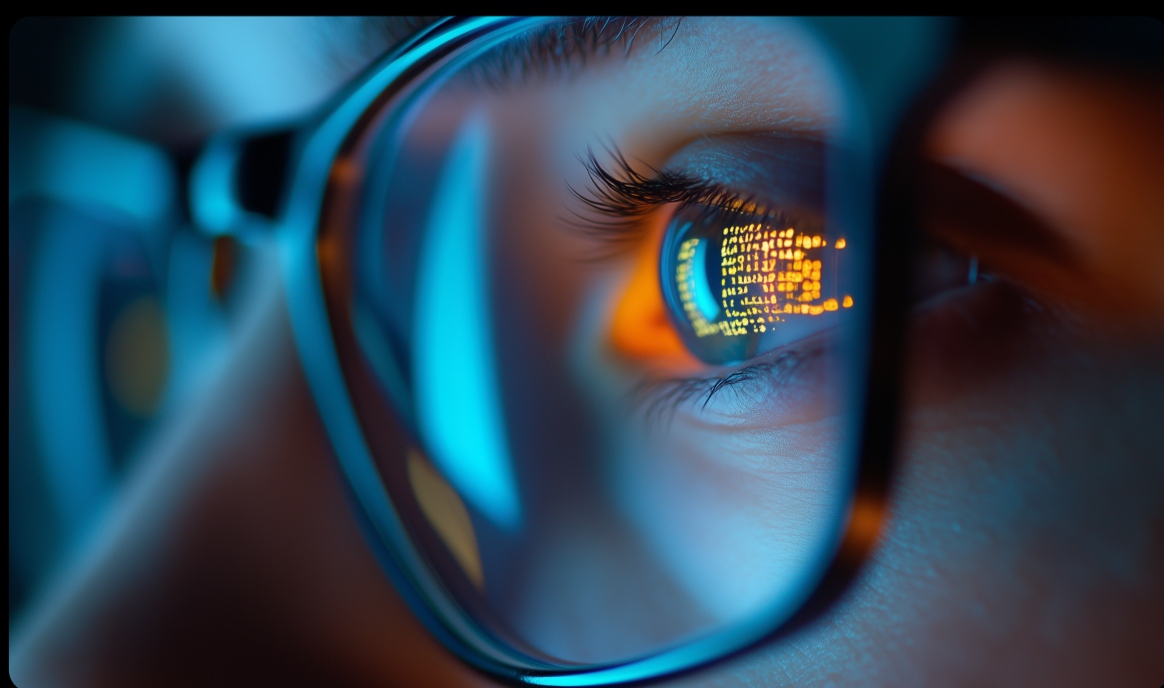
Bounce back with confidence through automated disaster recovery plans and AI-led resilience:

- ✓ **Cyber Recovery:** Isolated, AI-validated recovery environments
- ✓ **Data Backup & Resiliency:** Continuous backup health checks
- ✓ **Incident Response Services:** Automated IR workflow acceleration
- ✓ **Business Continuity & Compliance Readiness:** AI-modeled risk impacts
- ✓ **AI-Enabled Recovery Planning:** Predictive scenario simulations
- ✓ **Remediation Services:** Intelligent vulnerability remediation
- ✓ **Multi-Cloud Security Recovery:** Auto-orchestrated failover across platforms

## Why C1?

C1 combines AI innovation with deep human expertise through:

- **Advisory Services:** AI-readiness assessments and roadmaps
- **Professional Services:** Custom integration of AI/ML-powered tools
- **Managed Services:** Always-on AI-enabled detection and response



Ready to elevate your security with AI? Connect with a C1 Security Expert today to unlock smarter protection.

CONTACT US NOW



AI-powered Communications, Infrastructure, and Security

onec1.com

© Copyright 2025. Private and confidential.